



KONGSBERG

PRIVATRETTSSYMPOSIET UIO

12. JANUAR 2023

Hvordan få til effektiv datadeling i kontrakter?

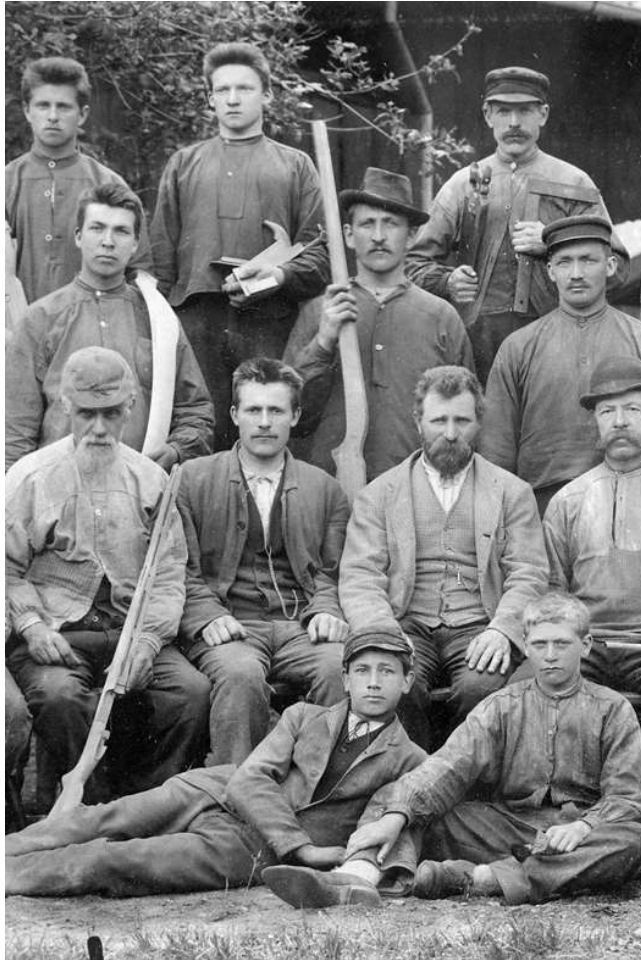
Innspill fra industrien

Lene Cecilie Høydahl
Kristian Østby-Deglum



KONGSBERG

200 YEARS OF DETERMINATION

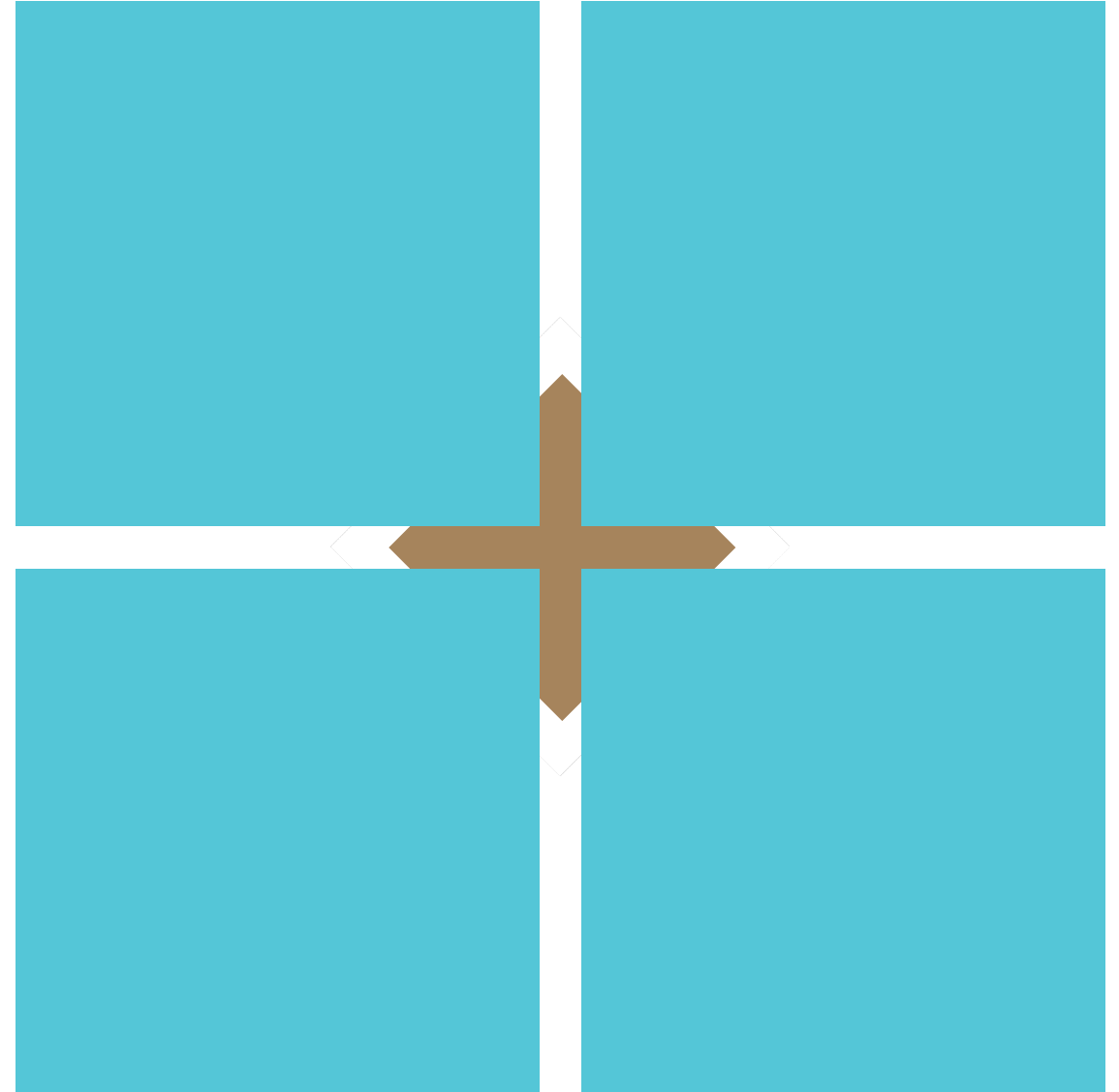


KONGSBERG



KONGSBERG

KONGSBERG in numbers





KONGSBERG

WORLD CLASS TECHNOLOGY FROM DEEP SEA TO OUTER SPACE



DEEP SEA



SEABORNE



LAND-BASED



AIRBORNE



DIGITAL FRONTIER



OUTER SPACE

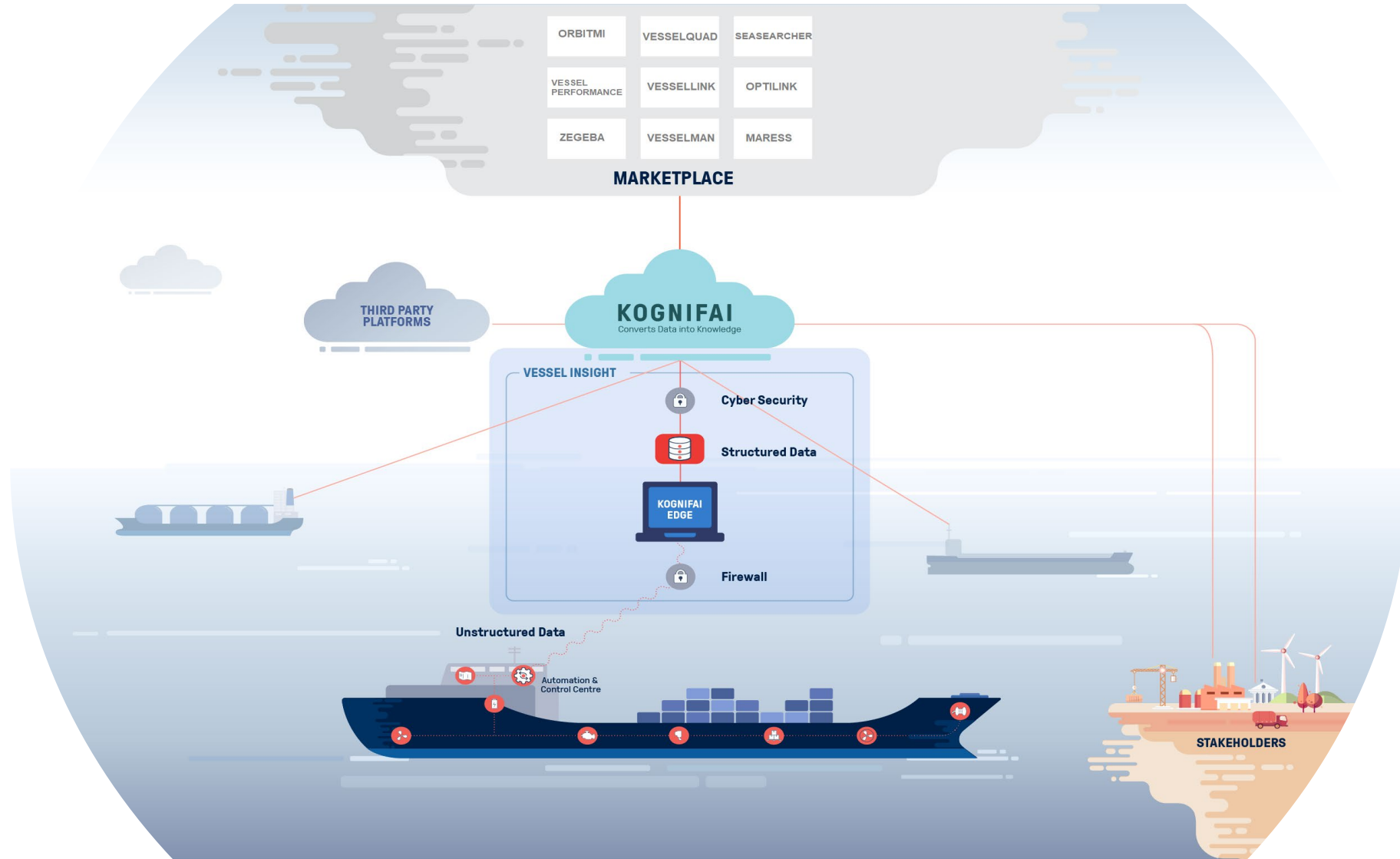


KONGSBERG





KONGSBERG

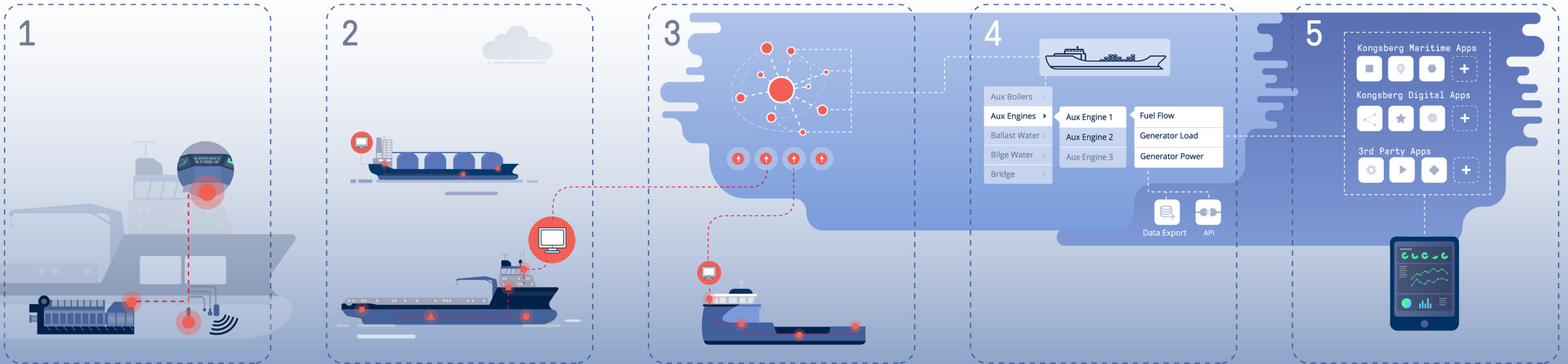




KONGSBERG

Vessel Insight

Powering more efficient, safe and sustainable vessel operations



1 Collecting data from any onboard source

Data creation from all onboard equipment & products based on sensors and supported protocols. and router towardConnection to Vessel Insight Edge, acting as firewall towards onboard control zone s

GSN.

WORLD CLASS – Through people, technology and dedication

2 Using one unified data infrastructure

Common interface allows data aggregation in one source before transmission into an integrated cloud storage avoiding costly & inefficient data silos.

3 Secure data transfer to cloud

VPN, cyber secure and redundant transfer of data to cloud. By contextualisation the data, Vessel Insights ensures scalability and efficiency of data use and prepares data for export or transmission into an

API.

KONGSBERG PROPRIETARY - See Statement of Proprietary information

4 Easy access to data through standardized asset model

Easy access & view of data in asset tree structure with full ownership and control of data and the ability to share data with 3rd party platforms and partners.

5 Choose from a number of market-leading applications

The Kognifai Marketplace is an open ecosystem that hosts KONGSBERG, OEM and 3rd party applications accessing data from the Vessel Insight Cloud. It is available for all customers utilizing the Vessel Insight data infrastructure.



KONGSBERG

FORUTSETNINGER FOR EFFEKTIV DATADELING

1. Verdiskapende produkt og god kommersiell modell
2. Trygg og tillitsvekkende it-arkitektur
3. Sikring av konfidensialitet
4. Kontroll på sensitive data
5. Hensiktsmessig kontraktsregulering



KONGSBERG

KONFIDENSIALITET

"Confidential Information" means any and all non-public, proprietary and/or confidential information (whether or not it is identified as such) disclosed by a Party, regardless of whether such information is disclosed verbally, electronically, visually, or in a written or other tangible form. Confidential Information includes, but is not limited to, Customer Data, trade secrets, computer programs, software, formulas, inventions, techniques, documentation, marketing plans, strategies, forecasts and Affiliate and Third Party confidential information."

= ALL KUNDEDATA



KONGSBERG

EIENDOMSRETT / OPPHAVSRETT TIL KUNDEDATA

“Customer owns and retains all right, title and interest in and to the Customer Data.

KDI acknowledges that it neither owns nor acquires any additional rights in or to the Customer Data and that Customer only grants to KDI a non-exclusive, non-transferable right to use the Customer Data during the term of the Subscription Agreement as described in this clause and sub-license such right to its Associates.”

= KUNDEDATA ER KUNDENS EIENDOM



KONGSBERG

RETT TIL Å BENYTTE KUNDEDATA

*“KDI and its Associates are granted the right to access, collect, store, aggregate, analyze or otherwise use Customer Data for: a) providing the Kognifai Services; (b) monitoring, preventing, detecting and fixing issues related to the security and operation of Kognifai Services; (c) **improving and developing the Kognifai Services**; and (d) **creating benchmarking and statistical analysis (collectively “Analysis”)**, provided that the Customer Data is first anonymized. Improvements and developments under item c) and Analysis under item d) shall be exclusively owned by KDI or its Associates.”*

= LEVERANDØREN FÅR BRUKSRETT TIL KUNDEDATA, på gitte vilkår



KONGSBERG

**TAKK FOR
OPPMERKSOMHETEN**