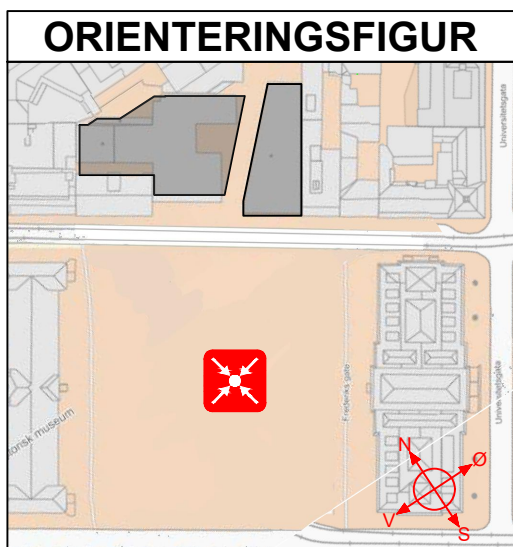
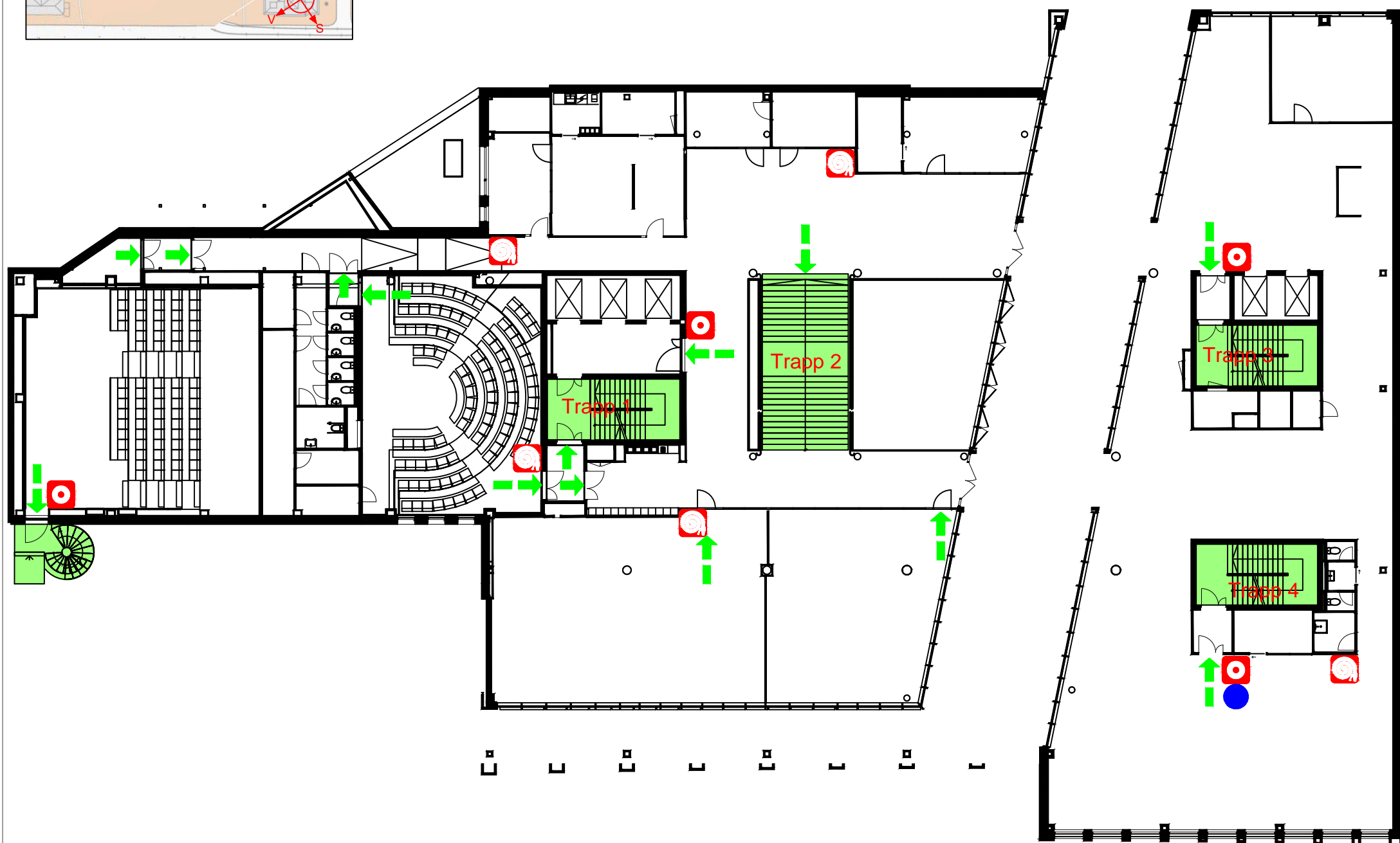



RØMNINGSPLAN / EVACUATION PLAN





Kristian Augusts gate 15-17 2. ETASJE

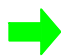


 Her står du
You are here

 Møteplass
Meeting point

 Brannmelder
Fire alarm

 Brannslange
Fire hose

 Rømningsvei
Emergency exit

 Trapp
Stairway

FIRE INSTRUCTIONS

MAKE YOURSELF FAMILIAR WITH THE EMERGENCY EXITS AND THE PLACEMENT OF FIRE-EQUIPMENT.

IN CASE OF FIRE YOU MUST:

ALERT If you can't hear any fire alarm, alert others.
Activate the manual fire alarm. Call the fire department - 110.

SAVE People at risk of fire.

EXTINGUISH Try to extinguish the fire with the nearest fire hose or extinguisher.

EVACUATE Evacuate the building, use the nearest escape route.

HELP Help personell.

BRANNINSTRUKS

GJØR DEG KJENT MED NØDUTGANGER OG PLASSERING AV BRANNSLUKKEUTSTYR.

VED ETHVERT TILLØP TIL BRANN SKAL DU:

VARSLER Dersom det ikke høres brannalarm, varsle andre.
Trykk på manuell brannmelder. Ring brannvesenet - 110.

REDDE Mennesker utsatt for brannfare.

SLOKKE Forsøk å slokke brannen med nærmeste slokkeutstyr.

RØMME Evakuere bygningen, bruk nærmeste rømningsvei.

HJELPE Bistå ansvarlig personell.