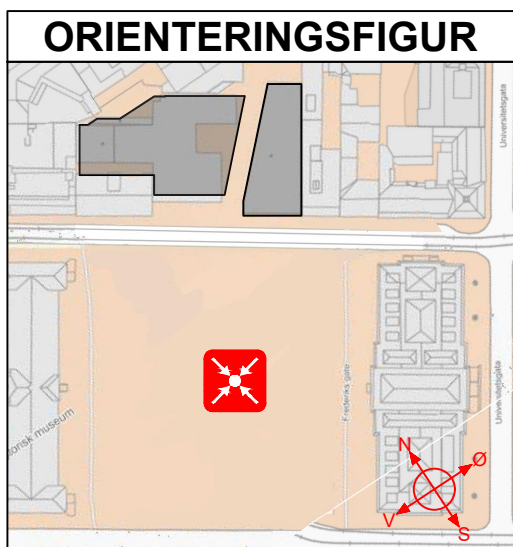
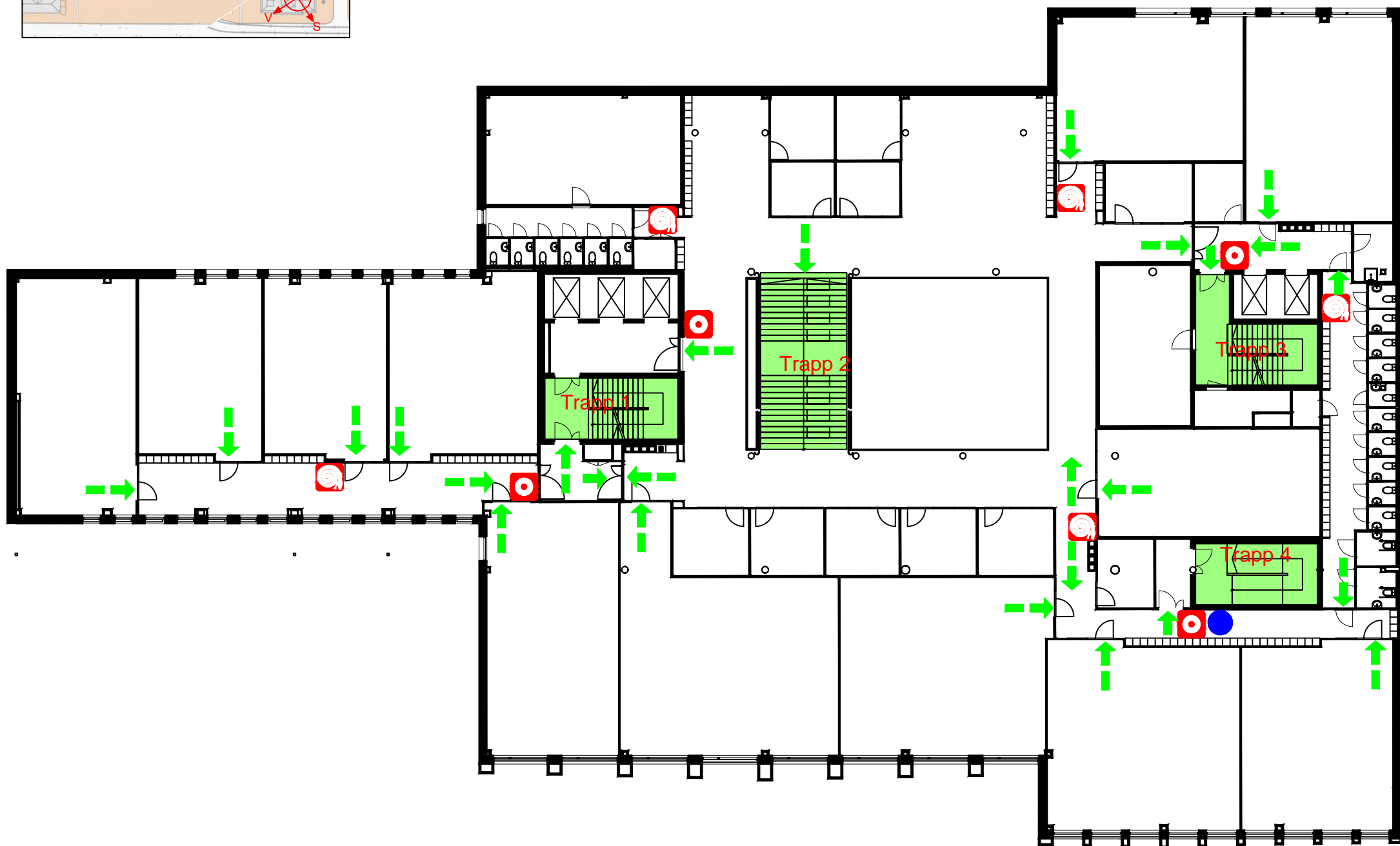



# RØMNINGSPLAN / EVACUATION PLAN





## Kristian Augusts gate 15-17 5. ETASJE

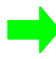


 Her står du  
You are here

 Møteplass  
Meeting point

 Brannmelder  
Fire alarm

 Brannslange  
Fire hose

 Rømningsvei  
Emergency exit

 Trapp  
Stairway

## FIRE INSTRUCTIONS

MAKE YOURSELF FAMILIAR WITH THE EMERGENCY EXITS AND THE PLACEMENT OF FIRE-EQUIPMENT.

IN CASE OF FIRE YOU MUST:

- ALERT** If you can't hear any fire alarm, alert others. Activate the manual fire alarm. Call the fire department - 110.
- SAVE** People at risk of fire.
- EXTINGUISH** Try to extinguish the fire with the nearest fire hose or extinguisher.
- EVACUATE** Evacuate the building, use the nearest escape route.
- HELP** Help personell.

## BRANNINSTRUKS

GJØR DEG KJENT MED NØDUTGANGER OG PLASSERING AV BRANNSLUKKEUTSTYR.

VED ETHVERT TILLØP TIL BRANN SKAL DU:

- VARSLE** Dersom det ikke høres brannalarm, varsle andre. Trykk på manuell brannmelder. Ring brannvesenet - 110.
- REDDE** Mennesker utsatt for brannfare.
- SLOKKE** Forsøk å slokke brannen med nærmeste slokkeutstyr.
- RØMME** Evakuere bygningen, bruk nærmeste rømningsvei.
- HJELPE** Bistå ansvarlig personell.